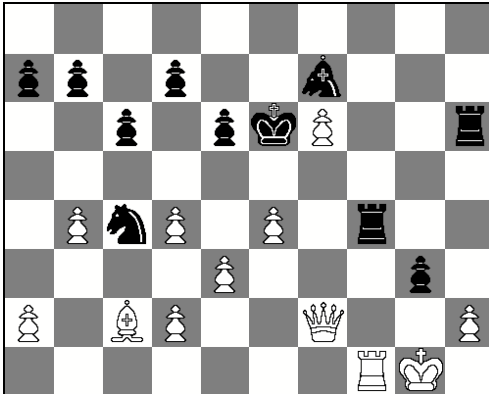
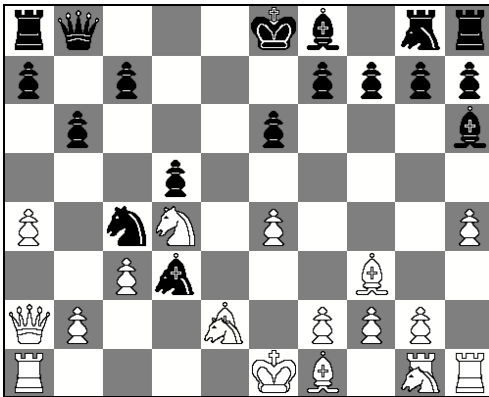


Position 1:



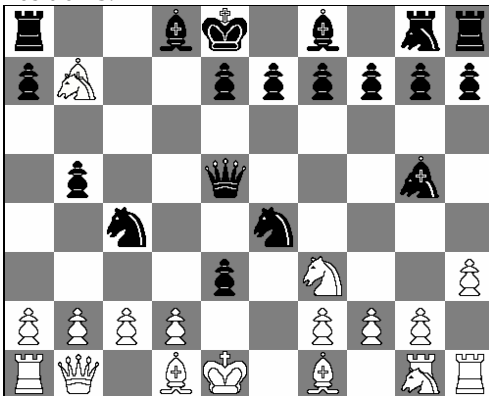
White to move and force mate

Position 2:



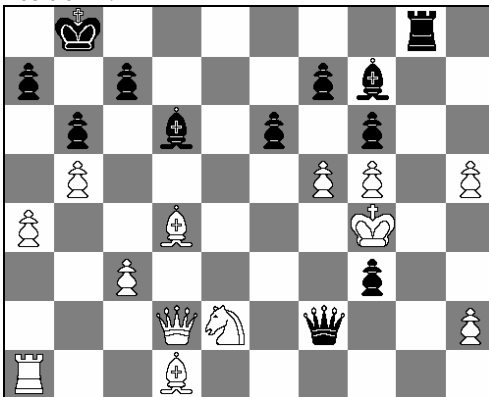
Black to move and force mate

Position 3:



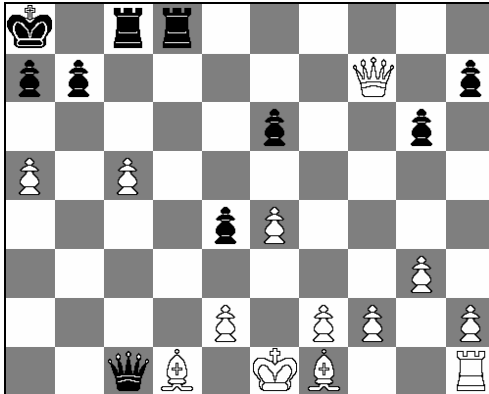
White to move and force mate

Position 4:



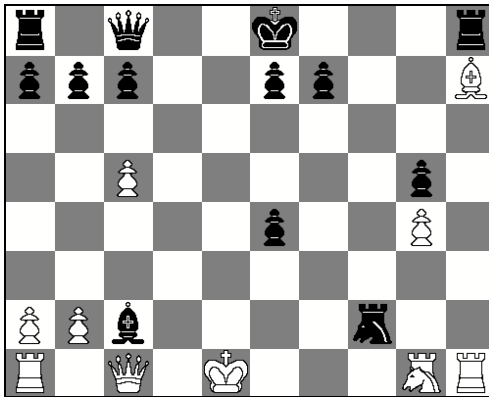
Black to move and force mate

Position 5:



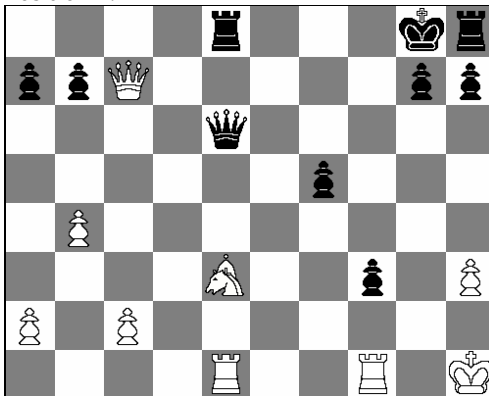
Black to move and force mate

Position 6:



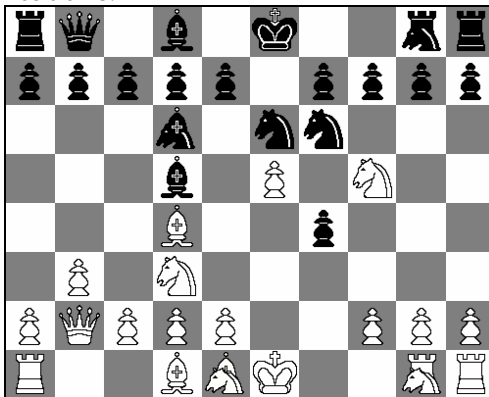
Black to move and force mate

Position 7:



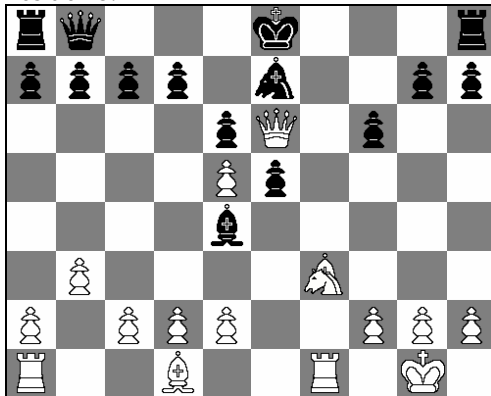
White to move and force mate

Position 8:



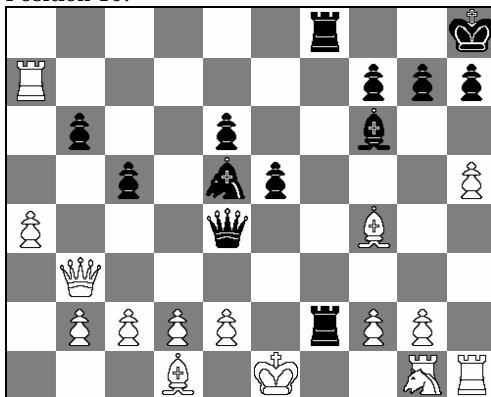
Black to move and force mate

Position 9:



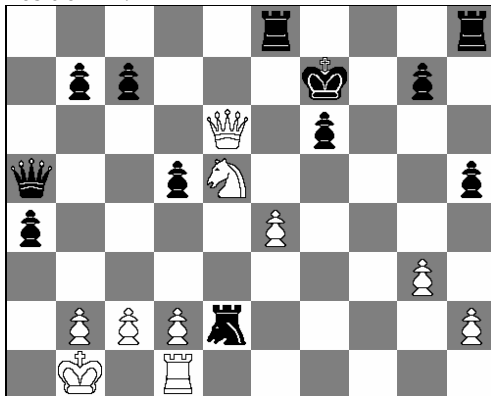
White to move and force mate

Position 10:



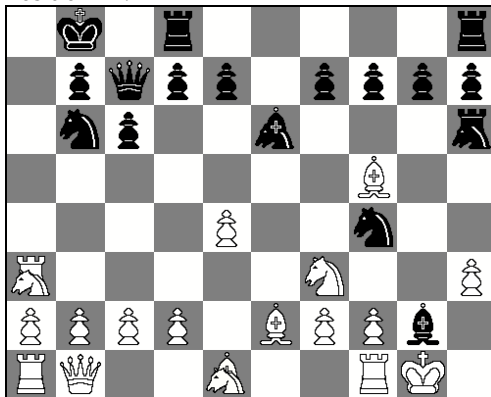
Black to move and force mate

Position 11:



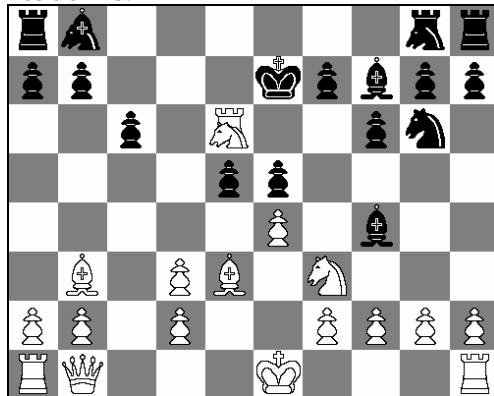
White to move and force mate

Position 12:



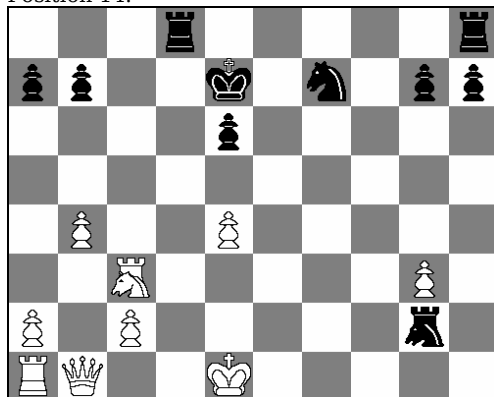
Black to move and force mate

Position 13:



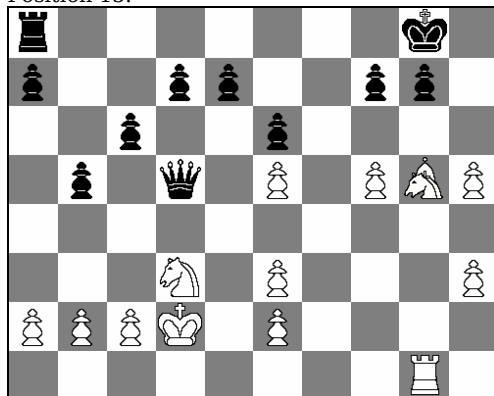
White to move and force mate

Position 14:



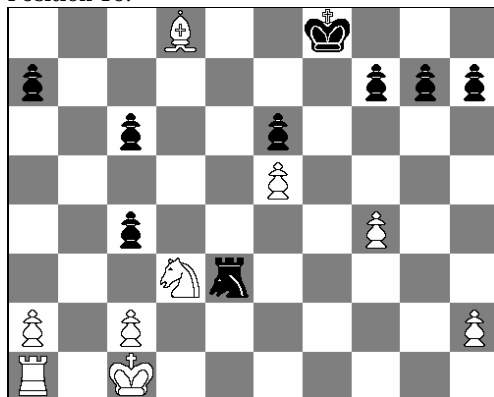
Black to move and force mate

Position 15:



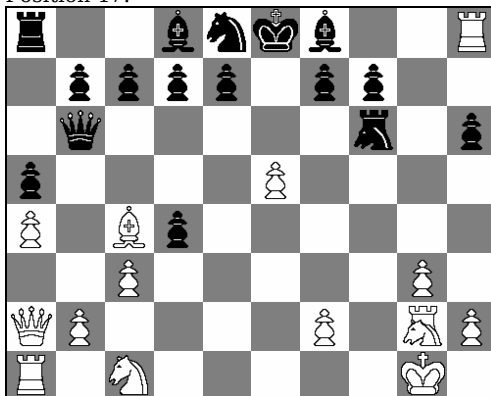
White to move and force mate

Position 16:



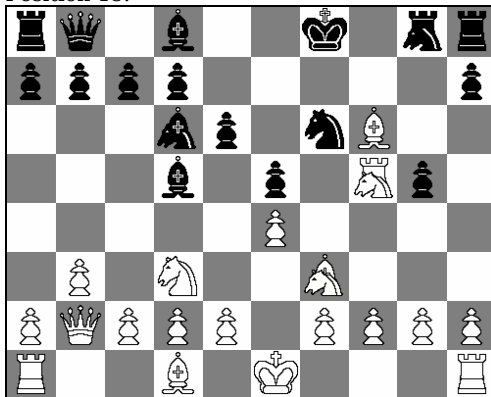
Black to move and force mate

Position 17:



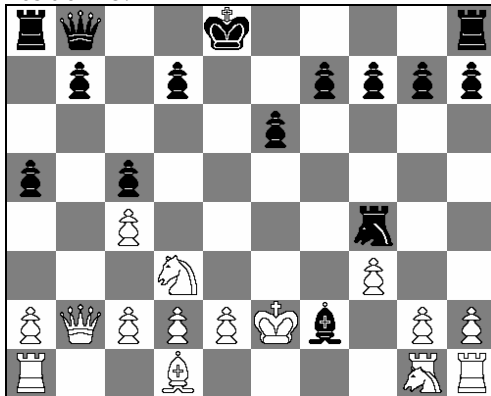
Black to move and force mate

Position 18:



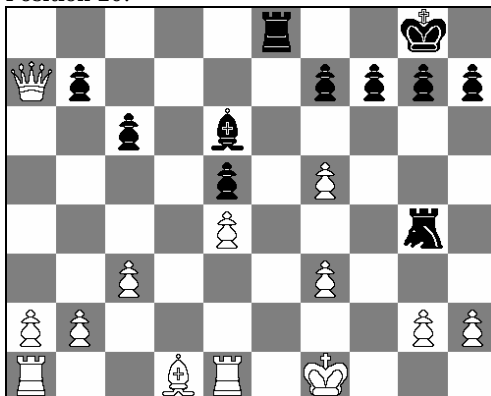
White to move and force mate

Position 19:



Black to move and force mate

Position 20:



Black to move and force mate

Solutions:

- 1) 1. Qg5#
- 2) 1. ... Nd2#
- 3) 1. Ac6 Kf8 2. Ad7#
- 4) 1. ... fxc5+ 2. Qxc5 hxc5#
- 5) 1. Rxd1+ Kf2 2. Qxf4#
- 6) 1. ... Qe8+ 2. Qe3 Qxe3 3. Be2 Qxe2#
- 7) 1. Af5+ Qxf5 (Kh8 2. Qh7#) (Qg6 2. Axc6#) 2. Rxe8+ Qf8 3. Rxf8#
- 8) 1. ... Axc2+ 2. Kf2 g3+ (3. Ke3 Ng4#) 3. Nxc3 Ng4#
- 9) 1. Ah5 and now
 - a) 1. ... Qe8 2. Qg7+ Ke7 3. Af6#
 - b) 1. ... Ke8 2. Ag7#
 - c) 1. ... [Anything else] 2. Qxf7#
- 10) 1. ... Axc2+ 2. Ke1 Qxc4+ 3. Qg3 Axc3# (or Qxc3#)
- 11) 1. Qxc6+ Kh8 2. Rh1+ Mh2 3. Rxh2#
- 12) 1. ... Nxc3+ 2. KxI2 (if 2. Bxc3 Mxc3+ 3. KI2 Ah4#) Ah4+ and now:
 - a) 3. Kh3 Mj4+ 4. Kg4 NI5#
 - b) 3. Kj1 Nxc2+ 4. KI1 Mj1#
- 13) 1. Mc7+ and now:
 - a) Kf8 2. Bc5+ Be7 3. Bxe7#
 - b) Kg6 2. Bf7+ Kf6 3. Nh5#
 - c) Kf6 2. fxe5+ Kxe5 3. Mf7# or 2. ... Kg6 3. Bf7#
- 14) 1. ... Rjh8 2. Mg3 (the only move that stops 2. Rh1#) Mxc3 and now:
 - a) 3. Kf2 Mxe4+ 4. Kf3 (4. Kg1 Mg4 5. Kf1 Rhf8 followed by Mg2#) Mc3 5. Kg2 Rd2 6. Kg1 Mf3#
 - b) 3. Qb2 Mxe4+ 4. Kf1 (forced) Rdf8+ 5. Qf6+ (to delay Me2) Rxf6 6. Kg1 Me2#
 - c) 3. Qb3 Mg2+ 4. Kf1 (forced) Md2+ 5. Kg1 (5. Kf1 Rh1#) MI2 6. Kf1 Rh1#
- 15) 1. Ah6+ Kh8/Kj8 2. Rxi7 Qxd3+ (to delay Ri8) 3. Kxd3 [Any move] 4. Ri8#
- 16) 1. ... c3! and now:
 - a) 2. Nf2 Me2+ 3. Kb1 (if 3. Kd1 Mg1#) Me1+ 4. Nd1 Mxd1#
 - b) 2. (anything else) Mf1+ 3. Ne1 Mxe1#
- 17) 1. ... Qd6+ and now:
 - a) 2. Kj1 Mh1+ 3. MI1 QxI1#
 - b) 2. Mg3 Qxc3+ 3. Kj1 Qh3+ 4. KI1 Qh1#
 - c) 2. Mg3 Qxc3+ 3. KI2 Qxc2+ (Mh2+ mates slower) 4. Kj3 Mj5# (4. KI1/Kj1 Mh1#)
- 18) 1. Mg7+ and now
 - a) 1. ... Mxc7 2. Qxc7#
 - b) 1. ... Kf8 2. Mxi8+ (double) (Kf7? 3. Qg7#) Ke7 3. Bg5+ Kf7 4. Qg7#
 - c) 1. ... Kh8 2. Bi7+ (Mxc6+ mates more slowly) Mxi7 3. Mxc6+ (Ki8 4. Mh6#) Kh7 4. Qg7 Ki8 5. Qi7#
- 19) 1. ... Mf5+! and now
 - a) 2. Ke1 Qg3+ 3. Nf2 Qxf2#
 - b) 2. Kxc2 Qg3+ 3. Kh1 Mf1#
 - c) 2. Kg1 Mf1+ 3. Kxc2 Mh2+ 4. Kg1 Qg3#
 - d) 2. Nf4 Qxf4 and now
 - d1) 3. Ke1 Qf2#
 - d2) 3. Kxc2 Qg3 4. Kh1 Mf1#
 - d3) 3. Kg1 Qf2 4. Kh2 Qg3 and
 - d3a) 5. Kg1 Bc6+ 6. Mg2 Qxc2#
 - d3b) 5. KI3 Mh5 (Bxc3+ also mates) (6. KI4 Qi5 7. Kj3 Qj5#) 6. Kj3 Qj6 7. KI4 Qj5#
- 20) 1. ... MxI2+ 2. Kh1 Mxj2+ 3. Kg1 (if KI1 Mj1#) Mj1+ 4. Kg2 Mxe1+ 5. Kh2 Mj1+ 6. Kg2 Mj2+ 7. Kg1 MI2+ 8. Kh1 Rf1+ 9. Qg1 Rxg1#